

Benchmarking Energy Exercises

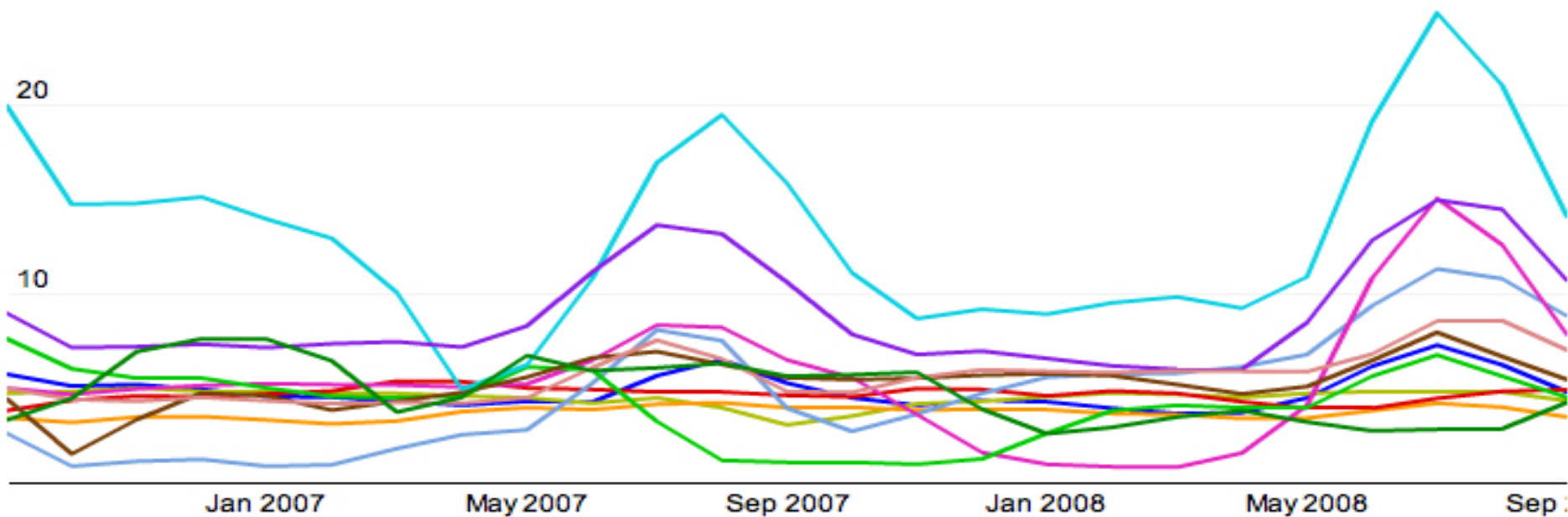
- Each group looks at their Energy Tracker output and asks:
 - What can I tell about this portfolio?
 - What else do I want to know or investigate?
 - What actions might I take?
 - What if anything could be misleading in the data output?

Group 1 – Results for 1 Apartment Building Located in Cambridge MA

Electric use in kWh per bedroom

View: Electricity use in units of kWh per bedroom for most recent 2 years

[change display mode](#) [add to dashboard](#) [click and drag to zoom in](#)



Legend (click labels to toggle display)

APARTMENT UTILITY ACCOUNTS

- | | | |
|---|--|--|
| ■ Apt. #101 Electric (#2... | ■ Apt. #102 Electric (#2... | ■ Apt. #103 Electric (#2... |
| ■ Apt. #201 Electric (#2... | ■ Apt. #202 Electric (#2... | ■ Apt. #203 Electric (#2... |
| ■ Apt. #301 Electric (#2... | ■ Apt. #302 Electric (#2... | ■ Apt. #303 Electric (#2... |
| ■ Apt. #304 Electric (#2... | ■ Apt. #G01 Electric (#2... | ■ Apt. #G02 Electric (#2... |

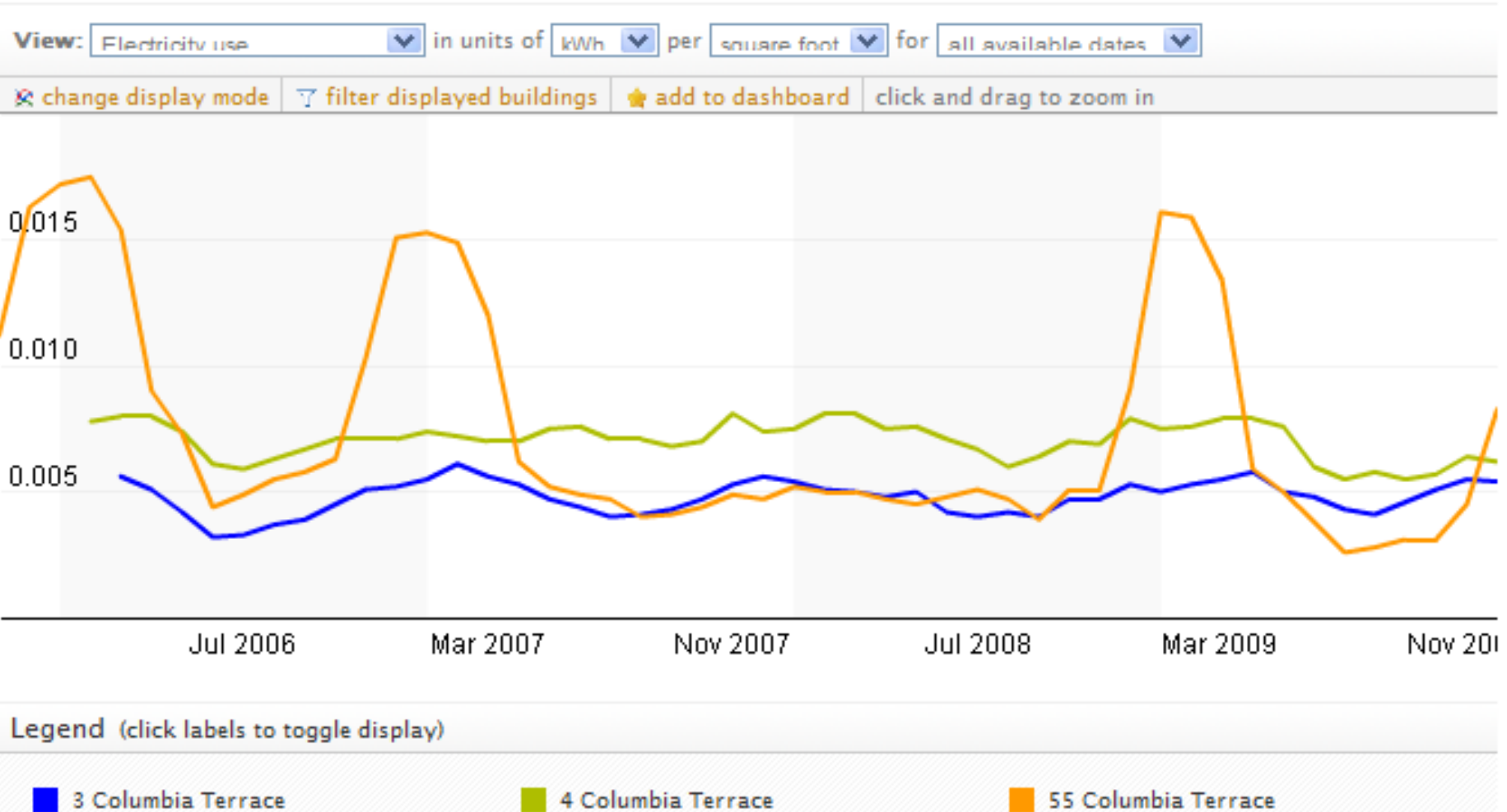
Columbia CAST



- 42 Units
- Slated for Mod Rehab
- More than double BTU per sq. ft. than rest of portfolio

Group 2: 55 Columbia Terrace had lighting retrofit March 2009. One apartment has its own heating system, that unit was vacant from May 2007-August/Sept 2008.

Electricity use in kWh per square foot (daily)



Group 3: Calculate Base & Heating Load

- Refer to Exercise #1 - Benchmarking