

Healthy Home Assessments: Principles and Practice

Introduction
Working with People

What am I doing here?



Photo courtesy of the Center for Environmental Health, Children's Mercy Hospital, © 2010.

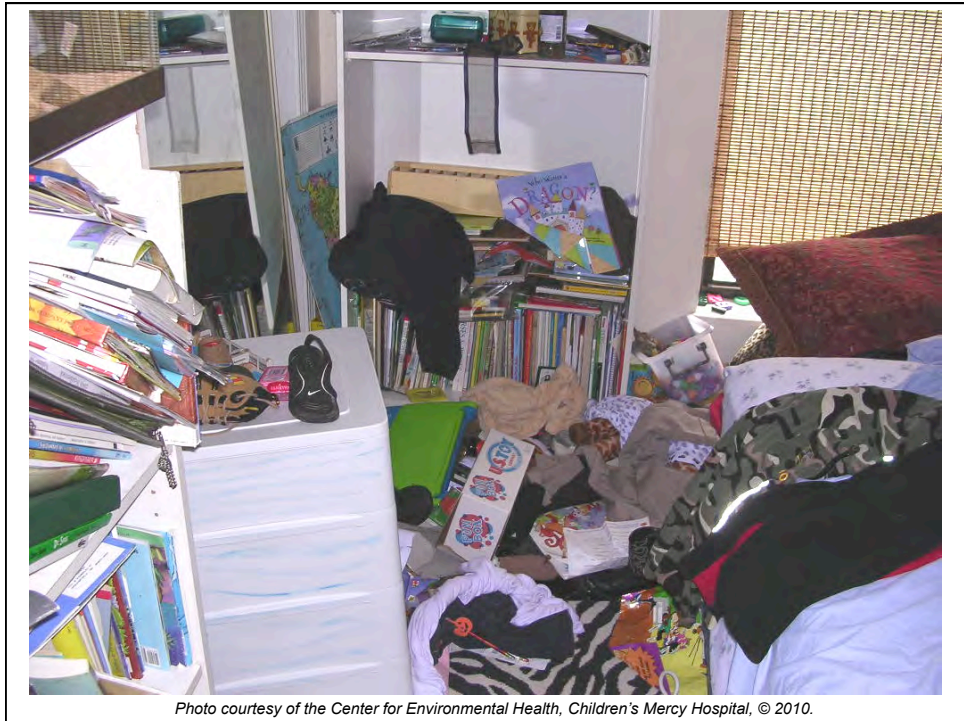


Photo courtesy of the Center for Environmental Health, Children's Mercy Hospital, © 2010.



Photos courtesy of the Center for Environmental Health, Children's Mercy Hospital, © 2010.

When We Visit Homes-

How Do We Identify and
Communicate Concerns?