


# MODULE 2: DO A HEALTHY HOMES ASSESSMENT



Healthy Housing  
Solutions<sup>INC.</sup>

---

---

---

---

---

---



---

---

## LEARNING OBJECTIVES

By the end of this module, students will be able to:

- Determine assessment purpose and goals
- Describe links between deficiencies and hazards
- Summarize detailed information to be collected
- Explain timeframe to be considered when evaluating deficiencies
- Identify currently available inspection methods
- Evaluate unique considerations for different dwelling types



---

---

---

---

---



---

---

---

## THE HHRS PROCESS

<b>Step 1</b> <ul style="list-style-type: none"><li>• Inspecting the Dwelling</li></ul>	<b>Step 2</b> <ul style="list-style-type: none"><li>• Linking Deficiencies to Hazards</li></ul>
<b>Step 3</b> <ul style="list-style-type: none"><li>• Scoring the Hazard</li></ul>	<b>Step 4</b> <ul style="list-style-type: none"><li>• Determining the Appropriate Action</li></ul>



---

---

---

---

---

---

---

---

## ASSESSMENT GOALS AND PURPOSE

- Ask about occupants' goals for assessment
- Address occupant concerns
- Agree on purpose of assessment



4

---

---

---

---

---

---

---

---

## ASSESSMENT STEPS

- Establish initial contact /collect information
- Determine relevant Environmental History
- Establish clear purpose and goal for the assessment
- Perform site visit/walk-through
- Conduct Qualitative/Quantitative assessments
- Generate report



6

---

---

---

---

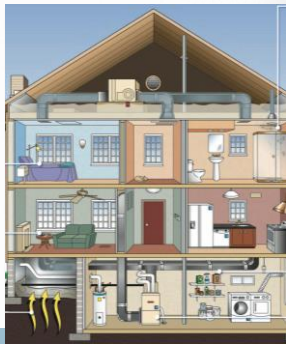
---

---

---

---

**Homes are "Systems"**



6

---

---

---

---

---

---

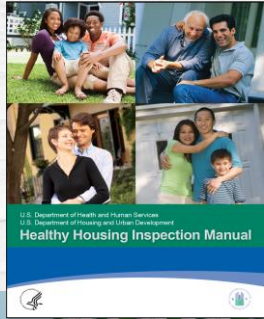
---

---



### SAMPLE ASSESSMENT TOOL

Download at <http://www.cdc.gov/nceh/publications/books/inspectionmanual/>



10

---

---

---

---

---

---

---

---

### SAMPLE ASSESSMENT TOOL

- Contact the Environmental Health Department at Children's Mercy Hospital at <http://www.childrensmercy.org/CEH/> for this tool.



11

---

---

---

---

---

---

---

---

### WHAT TO ASSESS

- Each deficiency
- Dwelling as a whole
- Surrounding spaces



12

---

---

---

---

---



---

---

---

### WHAT TO OBTAIN

- Background, historical information, plans, records
- Authority for destructive testing



13

---

---

---

---

---

---

---

---

### WHAT DO YOU LOOK FOR?

- Asthma triggers
- Indoor combustion sources
- Structural/physical defects
- Contaminants
- Excessive moisture/water infiltration
- Safety concerns
- Sanitation issues



14

---

---

---

---

---

---

---

---

### ASTHMA TRIGGERS



15

---

---

---

---

---

---

---

---

## INDOOR COMBUSTION SOURCES



---

---

---

---

---

---

---

---

## THE WEATHER AND SEASONS

- Weather can dramatically affect conditions
- Differences from summer to winter
- HHRS considers likelihood of occurrence up to 12 months after assessment



---

---

---

---

---

---

---

---

## HOW WEATHER (AND WATER) CAN AFFECT HOMES

Figure 4.11 Ways in Which Water Can Enter a Building (Envelope leaks can occur from anywhere in the building roof, windows, walls, doors and penetrations)



---

---

---

---

---

---

---

---

### ASSESSING MULTIFAMILY DWELLINGS

Determine scope of work – individual unit or multiple units

Number and relative position of other units

General details about shared rooms and other common areas



19

---

---

---

---

---

---

---

---

### ASSESSING OTHER MULTIFAMILY AREAS

- Concentrate on walls, windows, roof
- Note external means of access, refuse storage, amenity spaces



20

---

---

---

---

---

---

---

---

### SINGLE ROOM OCCUPANCIES (SRO)

- Accommodation is non-exclusive
- Assess whole premises similar to single occupied house



21

---

---

---

---

---

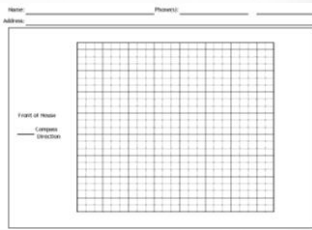
---

---

---

## ASSESSMENT CONVENTIONS

- Orientation, room and element locations
- Statement in report on conventions used
- Avoid confusion for subsequent assessments



22

---

---

---

---

---

---

---

---

## WHAT WE'VE LEARNED

- Determine assessment purpose and goals
- Describe links between deficiencies and hazards
- Summarize detailed information to be collected
- Explain timeframe to be considered when evaluating deficiencies
- Identify currently available inspection methods
- Evaluate unique considerations for different dwelling types



23

---

---

---

---

---

---

---

---