

RODENTS




Healthy Housing Solutions^{INC.}

OUTLINE

- What rodents are
- What they eat
- Where they live
- How to think like a rodent
- Prevention and control

Also known as...
ratones y ratas



Rat
Mouse

TRAINING CENTER
making homes healthier

www.healthyhousinginstitute.com/HHC

RODENTS ARE HEALTH HAZARDS

- Carry infectious diseases
- May cause asthma attacks
- Bite
- Damage food and property
- Can attract other pests
- Are repulsive




TRAINING CENTER
making homes healthier

www.healthyhousinginstitute.com/HHC

WHAT IS A RODENT?

A few types of rodents


- Rats
- Mice
- Squirrels
- Chipmunks
- Woodchucks



TRAINING CENTER
making homes healthier

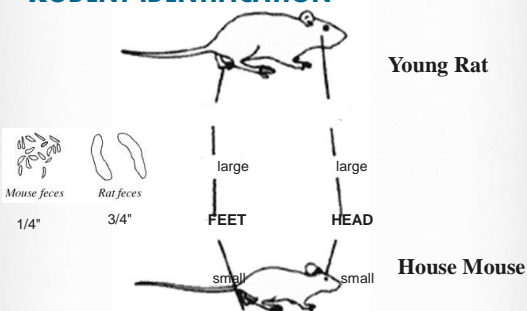
WHAT IS A RODENT?

- Gnaw constantly to create holes and pathways (can cut wood, plastics, hoses, sheetrock, copper, wires, etc.)
- Are most active during the first two hours after dusk
- Make lots of babies fast
- Travel the same paths nightly, staying close to walls, or any items that give them cover.



TRAINING CENTER
making homes healthier

RODENT IDENTIFICATION



Young Rat

large large

FEET HEAD

House Mouse

small small

Mouse feces 1/4"

Rat feces 3/4"

TRAINING CENTER
making homes healthier

RATS

- Will travel up to 450 feet from their burrow, but prefer to live close to food and water sources
- Exterior infestations are usually associated with trash
- In high-rise buildings, rats will infest ceilings if the compactor chute is not kept in clean and in good repair
- Crawl spaces become infested if food trash collects along the exterior foundation

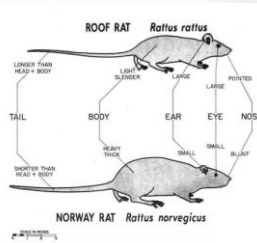


Norway rat burrow



RODENT IDENTIFICATION

- Roof rats nest up high
 - Occur in most coastal states south of Washington State and north to Maryland
- Norway rats nest within walls and ceilings or burrow in the ground outside
 - Occur throughout the U.S.



RATS

- Need a hole the size of a quarter or a ½ inch crack beneath a door to enter



- Are very smart, cautious, and afraid of new things
- Require 0.5–2.5 ounces of food each day
- Need ~1 ounces of water every day



MICE

- Breed rapidly
 - A single pair can become an infestation quickly!
 - Take action when evidence of ONE mouse is seen or heard
- They don't travel far—10-30 feet from their nest



One day old mouse pups



10

MICE

- Need a hole the size of a dime or a ¼ inch crack beneath a door to enter



- Mice are curious
- Require only ~1/10 ounce of food each day
- Don't need to drink water daily

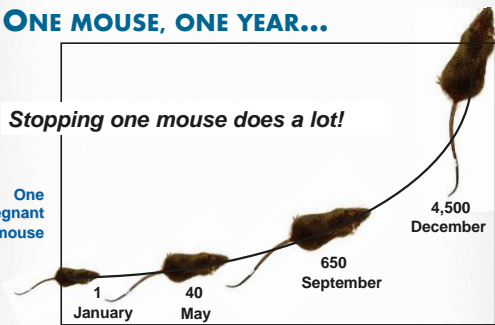


11

ONE MOUSE, ONE YEAR...

Stopping one mouse does a lot!

One pregnant mouse



12

SIGNS OF RODENTS

- Sightings
- Noise
- Gnaw marks
- Nests
- Rat burrows
- Droppings
- Dog or cat alerts
- Holes and rub marks
- Indicator pests



13

DROPPINGS AND URINE STAINS



Rodent urine stain in drop ceiling



Mouse droppings by a power strip



14

HOLES AND RUB MARKS



15

INDICATOR PESTS

Found near dead animals or trash



Blow Fly

Hide Beetle

Found near grain or bait stored in walls



Indian Meal Moth

Grain Beetle

TRAINING CENTER *making homes healthier* 16

WHAT RODENTS EAT AND DRINK

Rodents eat

- Human and animal food available in the area
- Human garbage is a major food source

Rodents drink

- Rats drink ~1 ounce of water daily
- Mice can get the water they need from their food

TRAINING CENTER *making homes healthier* 17

WHERE RODENTS LIVE

- Rats: Outside and inside, depending on garbage handling situation—indoors they infest walls, ceilings, concrete hollow block walls, and other nooks
- Mice: Nest in walls, below refrigerators and stoves, in cabinets, closets, couches, stored cardboard boxes, or in the ceiling



Rat burrow by a wall



Mouse nest in a hat

TRAINING CENTER *making homes healthier* 18

GOT RODENTS? NOW WHAT?

- There is not a single answer
- First find out:
 - Rat or mouse?
 - How many?
 - Where?
 - Why they are there?
- Then use solutions that provide:
 - Most effective prevention and control
 - Compatibility with people, pets, and other control measures



WRITE IN THE IPM LOG

- ✎ Find out:
 - Rat or mouse?
 - How many?
 - Where?
 - Food Source?
- ✎ Record:
 - Date
 - Detailed observations
 - Action taken



PREVENTION AND CONTROL: DUMPSTERS

- ✎ Dumpsters should be
 - free of holes
 - covered
 - placed on cement
- ✎ Screen drain holes
- ✎ Empty dumpsters regularly; they should never overflow



PREVENTION AND CONTROL: SANITATION

Eliminate harborage, food, and water especially in any areas that are warm



Clutter in a corner



22

PREVENTION AND CONTROL: EXCLUSION

For a hole, crack, or gap...



Stuff it



Seal it



Check it often



23

PREVENTION AND CONTROL: TRAPS

- Effective and reusable
- More ARE better
- Check often
- Placement is key



Trap bounced away from the wall when it snapped



24

TRAP PLACEMENT IS KEY

Place the trap against the wall where rodents travel.
(The bait side of the trap should touch the wall.)



Trap set correctly so it snaps towards the wall

TRAINING CENTER *making homes healthier*
www.healthymovingoutdoors.com/MTC 25

HOW TO TRAP MICE

Bait with what they're eating or using to nest

Bait & set many traps

6 traps for each mouse

At least 3 feet apart

May be set immediately, but will be more effective if left unset and re-baited for a day or two

TRAINING CENTER *making homes healthier*
www.healthymovingoutdoors.com/MTC 26

HOW TO TRAP RATS

Bait with what they're eating or using to nest

Place many traps

Bait and leave UNSET until rats are readily feeding

Bait and set all traps

TRAINING CENTER *making homes healthier*
www.healthymovingoutdoors.com/MTC 27

PREVENTION AND CONTROL:

TARGETED CHEMICAL USE

- The label is the law
- Most rodent baits require tamper-resistant stations
- Read the label on both the station and the bait
- The bait station should be secured, locked, and labeled
- If the rodents are inside, consider using traps



An opened bait station
(only PMPs should open bait stations)



28

A REVIEW OF EFFECTIVE IPM TOOLS

Sanitation—eliminate food source to eliminate the rodents

Exclusion—as important as sanitation

Traps—proper placement is critical

Rodenticides—last resort and not highly effective without sanitation and exclusion



29

HOW TO ELIMINATE A BURROW

- Do not use loose rodenticide bait indoors. Rodents may carry the bait and put it where children and pets can get at it.
- If using loose bait in exterior rat burrows, prevent rats from kicking out the bait:
 1. Use only bulk pellet formulations—NOT packet baits, block baits, or soft sachet baits
 2. Use a funnel to pour seeds into the burrow beyond the opening—at least 6 inches down
 3. A week after baiting, burrows that show no sign of fresh activity can be filled in
- DO NOT:
 - Stuff any packets into holes
 - Fill in burrows until rats are gone



30

QUESTIONS?